



Flat 10 5 Wheatstone Gardens, London, W10 5AF
£530 Per Week



Flat 10 5 Wheatstone Gardens, London, W10 5AF

£530 Per Week

A stylish one-bedroom apartment set within The Auria, a sought-after modern development moments from Portobello Road and the vibrant lifestyle of Notting Hill.

This well-designed home features a bright open-plan reception with a fully integrated kitchen, a spacious double bedroom, and a contemporary bathroom finished to a high specification. The apartment benefits from excellent natural light and a clean, modern layout, ideal for a single professional or couple.

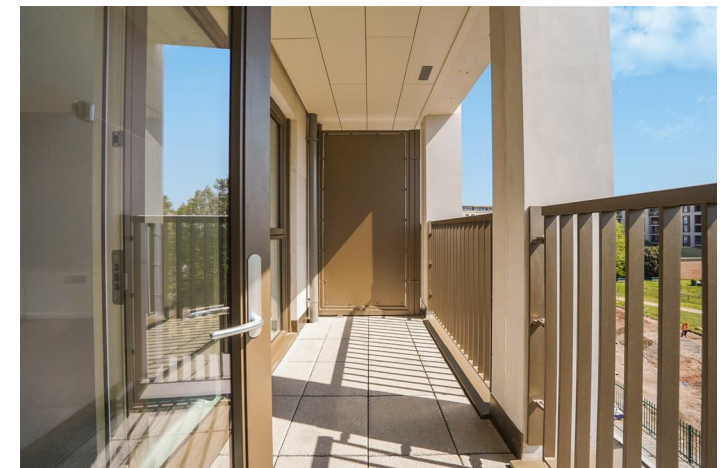
Residents of The Auria benefit from a premium living environment, with amenities including concierge service, residents' gym, and co-working space & lounge (subject to completion/availability), offering a convenient and lifestyle-led living experience.

Perfectly positioned in Zone 2, the property is within easy reach of Ladbroke Grove and Westbourne Park stations, providing excellent connectivity across London, while the cafés, restaurants and market atmosphere of Portobello Road are just moments away.

Description



Situation



Furnished
Council Tax Band: New Build
Available: 1st May 2026

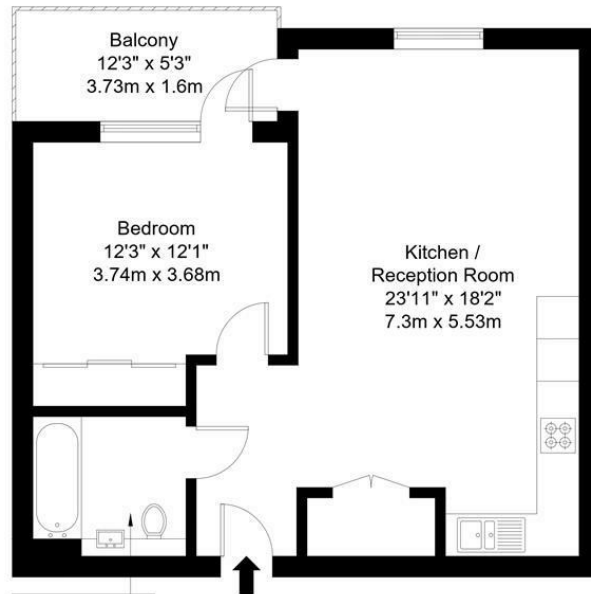
Floor Plans

Wheatstone Gardens, W10 5AF

Approx Gross Internal Area = 52.5 sq m / 565 sq ft

Balcony = 6 sq m / 65 sq ft

Total = 58.5 sq m / 630 sq ft



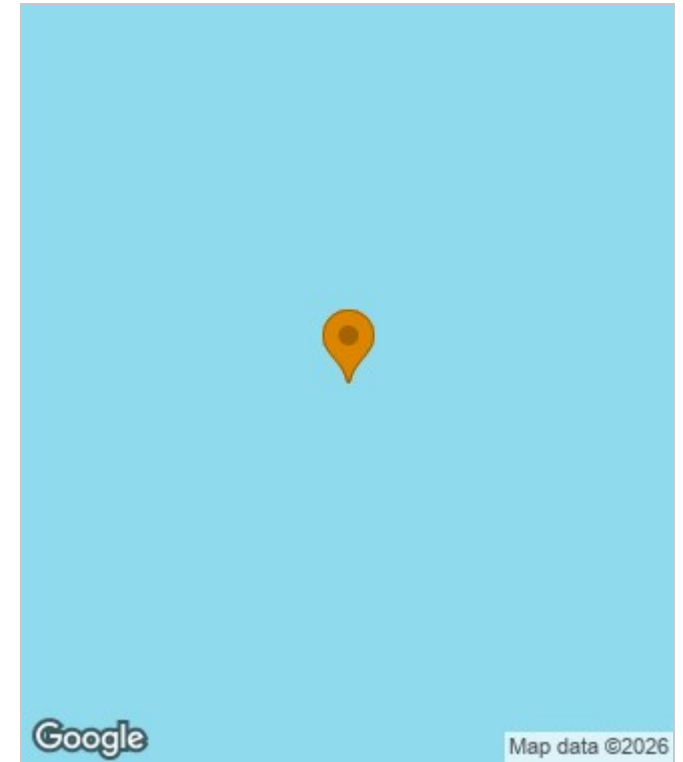
Third Floor

Ref :

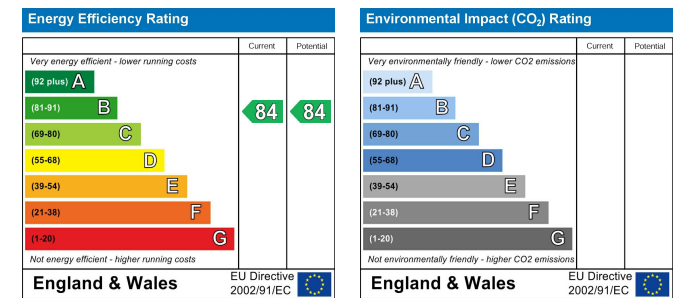
Copyright **BLEU PLAN**

The Floor plan is not to scale and measurements and areas shown are approximate and therefore should be used for illustrative purposes only. The plan has been prepared in accordance with the RICS code of Measuring Practice and whilst we have confidence in the information produced it must not be relied on. Maximum lengths and widths are represented on the floor plan. If there is any aspect of particular importance, you should carry out or commission your own inspection of the property.
Copyright @ BleuPlan

Area Map



Energy Performance Graph



These particulars, whilst believed to be accurate are set out as a general outline only for guidance and do not constitute any part of an offer or contract. Intending purchasers should not rely on them as statements of representation of fact, but must satisfy themselves by inspection or otherwise as to their accuracy. No person in this firm's employment has the authority to make or give any representation or warranty in respect of the property.

3 Shortlands, Hammersmith, London, W6 8DA

Tel: 020 8124 1073 Email: management@lessel.co.uk <https://www.lessel.co.uk>